



WALKING TOUR

Welcome to UW Oshkosh!



DEMPSEY HALL

DIRECTIONS: We recommend starting your tour at Dempsey Hall. Dempsey is located on Algoma Boulevard, next to Albee Hall and across the street from Clow Social Science Center. It is approximately the center of campus.

Opened: 1871, reconstructed in 1918 with various additions through 1969.

One of the oldest buildings on campus, Dempsey Hall is home to many administrative offices. It is located in the heart of campus and serves as the midway point between the academic and student life sides of campus. Dempsey is a great place to get questions answered about admissions, financial aid and scholarships, study abroad opportunities, class registration and more.

Did you know... that you can study abroad in more than 180 locations, both internationally and within the United States? Through UWO's Office of International Education in Dempsey Hall, students can embark on journeys from one week to a full academic year with financial assistance available for qualifying students.

The original Dempsey Hall was built in 1871 and burned down in 1916. The existing building was completed in 1918 to replace the original facility.

The main campus library used to be on the second floor of Dempsey Hall until Polk Library was built in 1962.

Above the front entrance to Dempsey Hall you can find four grotesques that each represent an aspect of science: Physics, Chemistry, Biology and Agriculture.

Offices/Departments:

- Academic Computing
- Admissions
- Administrative Services
- Cashier's Office
- Chancellor's Office
- Financial Aid
- Human Resources
- Registrar's Office
- Graduate Studies
- Information Systems & Technology
- Office of International Education
- Provost & Vice Chancellor
- Publications
- Student Accounts
- Student Affairs
- Records Office
- University Marketing & Communications
- Veteran's Resource Center



Oshkosh Normal School before it burned down in 1916

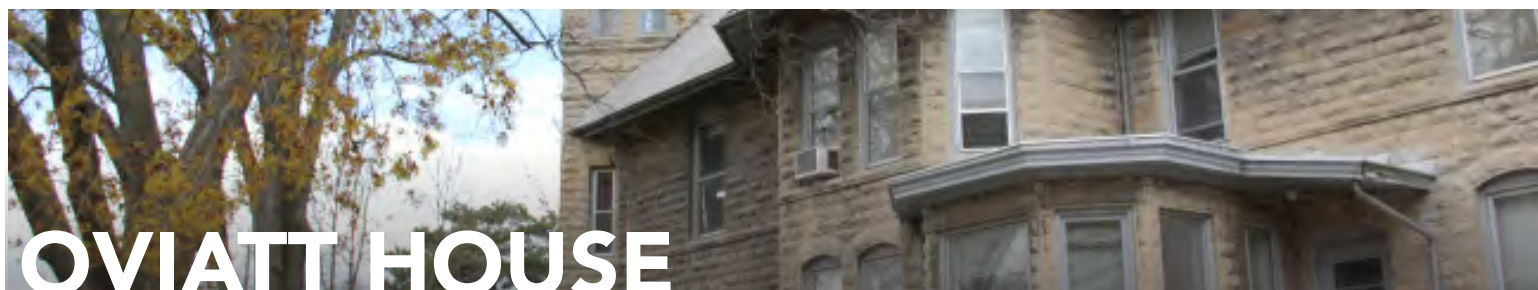


Old library in the second floor of Dempsey Hall, 1943



Students, 1930s

DIRECTIONS: The Oviatt House is next door to Dempsey Hall. If you're looking at the front entrance of Dempsey, the Oviatt house is just to the left!



OVIATT HOUSE

Opened: 1883

The Oviatt House was constructed in 1883 for Oshkosh attorney Moses Hooper. After living in the home for 17 years, Hooper sold the property to Dr. Charles W. Oviatt, a noted surgeon and physician, in 1900. After his death in 1912, Dr. Oviatt's heirs sold the house to the State Normal School Regents.

The Oviatt House was officially obtained by the University in 1913 with plans to use it as the President's residence. It soon became clear that there was a great demand for student housing, and the plans for the Oviatt House changed. The building became the first dormitory on campus, housing only female students. The 12 girls who lived in the dormitory were supervised by a housemother,

The Oviatt House was listed on the National Register of Historic Places in the United States in 1979.

Offices/Departments:

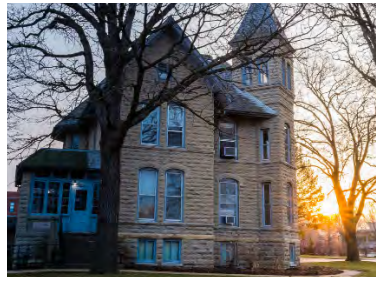
- Honors College



Oviatt House, 1900s

Eleanor Sheldon, to prevent homesickness and "unwise amusements." Because its small size caused economic problems for the University, the Oviatt House soon became inadequate for use as a dormitory. In 1930 it was converted into the President's residence and used for that purpose until 1990 when it became the headquarters of the UWO Foundation. Today, it primarily serves as the home of the Honors College.

Did you know... the interior was designed to be very luxurious and included a mural and fireplace tiles depicting scenes from Shakespeare?



Oviatt House at sunset



Dormitory living in the Oviatt house, 1915

DIRECTIONS: Continuing in the same direction, Swart Hall will be next door to the Oviatt House on the right side.



Opened: 1928, renovated in 1967 and 1990

Swart was one of the first buildings built on campus. It was named after Rose C. Swart, one of the first instructors at the University, then called Oshkosh Normal School. Swart Hall was constructed following World War I when the Oshkosh Normal School was in desperate need of new facilities. The new building allowed for the beginning of what would become one of the best educational programs in the region.

Swart became a fully functioning public primary school, where education students from the Normal School gained practical experience under the supervision of professors. The school had many accommodations, such as a large study hall with a stage and a demonstration room that could sit 144 people. There was a cafeteria, children's clinic, library and a gymnasium with showers.

In the early 1940s, Swart served as home of the Army Air Corps program, housing cadets and Air Corps offices.

Currently Swart is home to the mathematics department.

John F. Kennedy gave a speech in Swart Hall in 1960.

Swart initially served as a fully functional public primary school, where education students learned by helping teach. It was known as the Rose C. Swart Training School.

Between 1942-1943 Swart was used as housing for over 1,000 Army Air Corps recruits.

Swart originally housed the "Little Theatre," where many school drama productions were held.

Offices/Departments:
Mathematics Department



Swart Hall theatre



Entrance of Swart



Construction of Swart, 1928



Classroom inside Swart

DIRECTIONS: Continue up the block to the Theatre Arts Center, which will be on your right.



THEATRE ARTS CENTER

Opened: 1971

Students participate in theater productions (plays and musicals) produced throughout the year and utilize all the behind-the-stage facilities, including the scenery and costume construction areas, prop and costume storage and a sound/light control booth. There are also two makeup rooms and private dressing rooms within the building.

Did you know.... that the Theatre Arts Center has been given three department awards, 18 student awards and seven faculty awards?

Did you know.... that you don't have to be a theatre major to participate in the productions held here? All students can audition!

Four main stage productions are produced at the Theatre Arts Center each year.

The theater holds 500 people, has a computerized lighting control system, and uses a fully functional fly system that allows the stage crew to hoist (or fly) components like curtains, lights, scenery and stage effects.

Offices/Departments:
Theatre Department



Performance of "Antigone"

DIRECTIONS: The Theatre Arts Center is part of a larger complex known as the Arts & Communications Center. The rest of this facility is located next to the theatre in front of the same parking lot the Theatre Arts Center is adjacent to. Continue on the path in between the Theatre and the parking lot to enter the rest of the A&C.



ARTS & COMMUNICATIONS CENTER

Opened: 1970

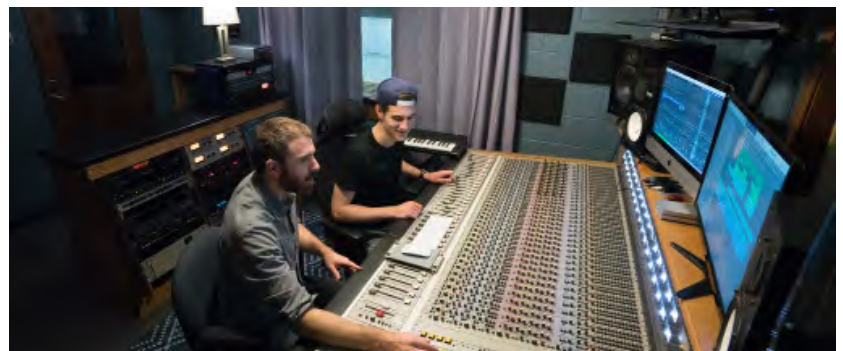
While it may be on the edge of campus, it's the center of creativity here at UW-O! This building is home to art galleries and studios, a grand music hall, dozens of practice rooms, an industry-standard HD TV station, an award-winning radio station, recording studios, composition studios, graphic design labs, and more! The A&C is home to many events throughout the semester, from art exhibits by professionals and students alike, to performances of all genres in the music hall, or the frequent live broadcasting on 90.3 WRST-FM or Titan TV. Want to get your creative juices flowing? There's a place for you in the Arts & Communications Center!

Did you know.... that 90.3 WRST is an award-winning student-run radio station, airing a wide variety of music, news and sports programs from the UW Oshkosh campus and surrounding community? WRST has been broadcasting from the Arts and Communications building since 1966.

There is an underground tunnel that connects the two wings of the Arts and Communications Center together with the Fredric March Theatre!

WRST's radio transmitter recently passed it's 300,000 hour mark - more than 34 years of transmitting!

Offices/Departments:
Allen Priebe Art Gallery
Annex Gallery
Art Department
Communication Studies
Music Department
Radio-TV-Film Department
Titan TV
Theatre Department
90.3 WRST-FM Oshkosh



Studio A, UW-O's original recording facility, is home to both vintage and modern studio gear.



Music Hall is where students can enjoy performances of all genres.



90.3 WRST-FM's news studio, where students write and record news broadcasts.



Art classroom inside the A&C

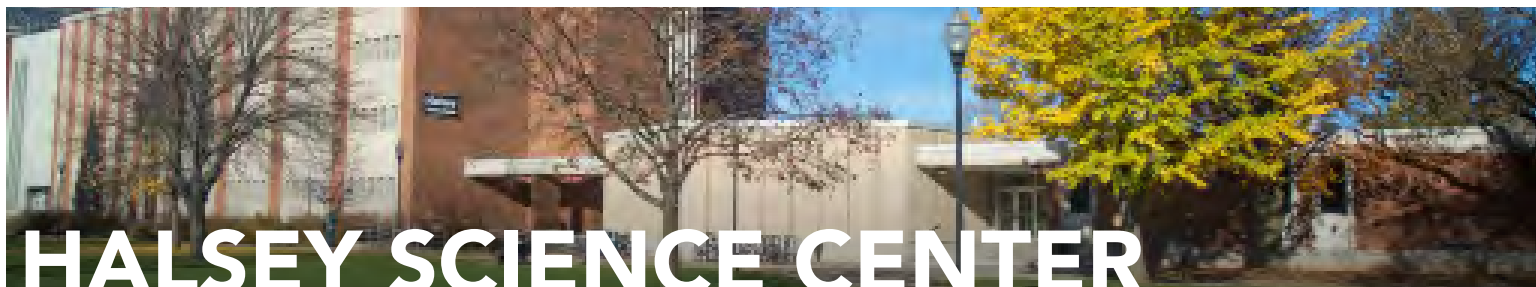


Choir room



WRST features high-quality industry-standard equipment.

DIRECTIONS: When exiting through the main doors of the Arts & Communications building, continue down the path that crosses between the parking lots. Halsey Science Center will be on your left.



Opened: 1963, renovated in 1969 and 2003

Students will find that most of their lab science courses are taught in Halsey. Initially, only the eastern wing was built, but in 1969 the second wing was added. The building has four levels and contains 18 general classrooms, three lecture halls and one general access teaching lab.

Did you know.... that Halsey is home to a 24/7 computer lab for students?

Did you know.... that there is an Einstein Bros coffee shop and convenience store located on the second floor stocked with grab-and-go options?

Halsey contains one of the country's only active ground squirrel breeding colonies, which is funded through the National Institute of Health.

In addition to several departmental offices, it also has laboratories and a greenhouse on the roof.

Halsey was named after Rufus H. Halsey, who was President of the University from 1899 to 1907.

Offices/Departments:

Biology Department
Chemistry Department
Computer Science Department
Geography Department
Office of Science Outreach
Physics and Astronomy Department
Women in Science Program



Lecture hall in Halsey



Students work in a chemistry lab.



Halsey features a 24/7 computer lab.

DIRECTIONS: Our next stop, Buckstaff Planetarium, is located out in front Halsey Science Center. It's a small domed building.



BUCKSTAFF PLANETARIUM

Opened: 1963

Opening in 1963, Buckstaff Planetarium was named after Ralph N. Buckstaff, who was heavily involved with astronomy at the University. When it opened, the cost of a ticket was only 50 cents for adults and 23 cents for students under 16. Currently Buckstaff Planetarium is closed and under renovation.

Did you know.... that when it first opened, Buckstaff Planetarium was the third largest observatory in the state?

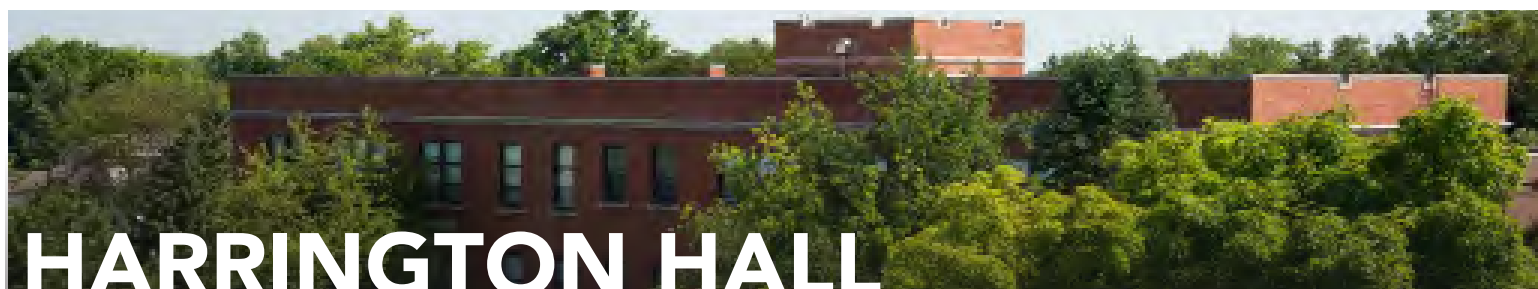
The planetarium's first open house brought in more than 600 people.

Offices/Departments:
N/A



John H. Evans and Ralph Buckstaff using a telescope at the observatory

DIRECTIONS: Continue down the sidewalk away from the Arts & Communications Center and towards Dempsey Hall. Once you've passed Halsey, on the left will be Harrington Hall.



HARRINGTON HALL

Opened: 1913

Harrington is home to the Geology Department, Archeology and Anthropology, and the Geography GIS Lab. The building was originally designed to teach the industrial arts, including sheet metals, bookbinding, woodwork and more. In 1964, when Halsey Science Center opened, Harrington Hall was renovated for the Geography and Geology programs.

Did you know.... there is a real dinosaur skull inside the main entrance?

Harrington Hall was one of the first buildings constructed on campus.

During World War I, the lawn of Harrington had a mock trench system for combat training!

Harrington was originally built to house the industrial engineering program and was known as the Industrial Engineering building when it was first built.

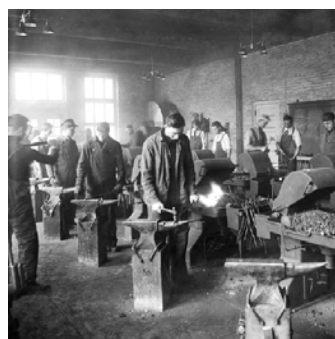
Offices/Departments:
Anthropology Department
Archeology Department
Geography Department
Geology Department



A T-Rex skull on display.



Harrington from the walking mall between Polk and Dempsey.



The metal foundry in Harrington, 1940s.



In this lab students study erosion.

DIRECTIONS: If you continue down the sidewalk, walking past the back side of Dempsey Hall, your next stop will be the next building on the left, Polk Library.



POLK LIBRARY

Opened: 1962, expanded in 1969

Polk Library is the study hub of campus. It has two wings and three floors, with ample space for group or individual work. It is the best collection of resources on campus for all kinds of research, and has many full-time staff ready and able to help you find what you're looking for. There are also plenty of computers and printers for students to use.

Did you know.... during finals week, Polk is open 24/7 and offers free late-night coffee?

There are more than 400,000 books in Polk Library.

Each floor gets quieter as you go up. The first floor is great for group work and conversation, but you could hear a pin drop on the third floor! Shhh!

Books aren't the only media available for checkout. Polk has a large selection of movies and games, and has a lab that checks out iPads, DSLR cameras, tripods and other media production gear!

Offices/Departments:

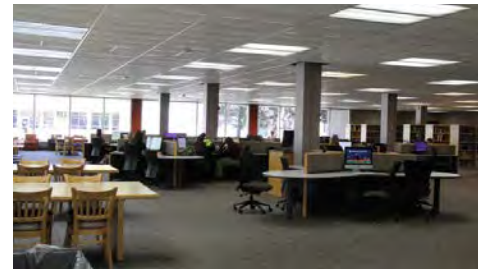
Collections and Technical Information
Reference and Instruction
Testing Services
University Archives
Student Technology Center



Entrance to Polk Library



Polk has plenty of tables for group work.



First floor of Polk Library.

DIRECTIONS: When you exit Polk out the main doors, your next stop is right in front of you, slightly to the left!



ALBEE HALL

Opened: 1955, renovated in 1993

Albee Hall is best known for its swimming pool, but is also home to racquetball courts, a full-court gym, fitness studios and even a few classrooms.

Did you know.... the pool is free for students to use? Plus you can bring a guest!

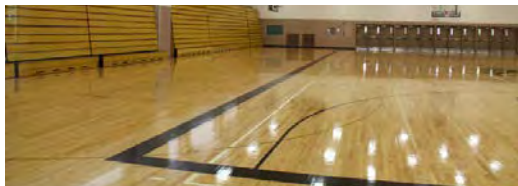
Albee was named after the first president of the University.

The pool features multiple diving boards including a high dive!

Albee serves as a polling location on campus during elections.

Offices/Departments:

Kinesiology Department
Health Department



Full-court gym

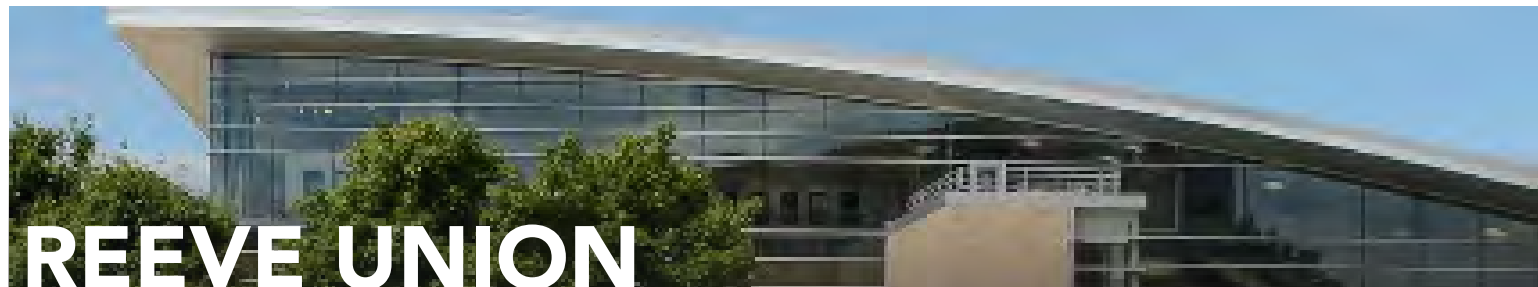


Albee swimming pool.



Diving board and pool.

DIRECTIONS: Continue down the sidewalk towards the large tan brick building with the large windows on the southern end of the path. Enter in the doors, and you've reached your next destination!



REEVE UNION

Opened: 1959, with renovations in 1963, 2000 and 2017

Welcome to the ever-bustling hub of campus life! Students come to Reeve to hang out with friends, study, enjoy entertainment, eat together, take advantage of resources, and seek out involvement opportunities across campus. Reeve is home to a full dining center, coffee shop, movie theatre, bookstore and convenience store. For events, lounge space and more dining options, there's the aptly named Titan Underground located downstairs. Whether you're looking for a Starbucks drink, want to see a band perform, meet with a group, catch a new film, or check out an art exhibit, you'll be able to do it all and more in Reeve Union!

Did you know.... that there are more than 180 clubs and organizations at UW Oshkosh? These include academic and professional clubs, arts and culture, faith organizations, social clubs, political groups, Greek organizations and other unique interest groups. There's something for everyone!



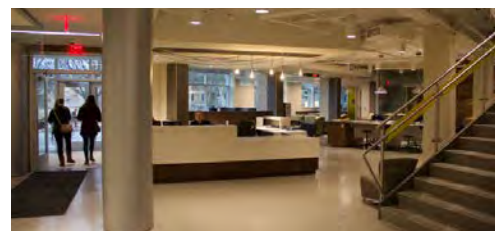
Students grab a cup of Starbucks coffee at Einstein Bros.



Titan Underground dining (They have great paninis!)



The outdoor patio on the third floor has great views.



The recently renovated front lobby of Reeve Union.



Band playing in Titan Underground.



Friends grab lunch together in the dining area.



Large events are held in the ballrooms upstairs.

Titan Underground was once a bowling alley! Some of the tables in Reeve are made from the glossy floor of the old bowling lanes. A mural was also located in this space, and it is still protected and sealed behind the new walls.

On the second floor of Reeve is the ballroom, where UWO hosts many larger events such as speaker presentations, illusions shows, musical performances, banquets and more.

The original student union was Mary Reeve Fraker's family home. She left it to the college to be used as a student social space after she passed away and asked that it be named after her grandfather, Thomas T. Reeve. When the university outgrew the house, it was demolished and the first iteration of Reeve Memorial Union as we know it today was built.

Reeve underwent a renovation to the front wing of the building in 2017!

Offices/Departments:

- Advance Titan
- Catering
- Corner Convenience Store
- Copy This!!
- Einstein Bros Bagels
- Fraternity and Sorority Life
- Gail F. Steinhilber Art Gallery
- Oshkosh Student Association
- Reeve Administrative Office
- Reeve Advisory Council
- Reeve Marketing
- Reeve Marketplace
- Reeve Union Board
- Reservations and Event Planning
- Student Leadership & Involvement Center
- Student Legal Services
- Titan Central
- Titan Underground
- University Books & More
- University Speaker Series
- UW Credit Union

DIRECTIONS: Take the walkway across from University Books & More up past the dining area and exit out the back doors. Across the street and slightly to the left is your next stop!



STUDENT SUCCESS CENTER

Opened: 1966, renovated in 2010

Formerly known as Elmwood Commons, this building opened in 1966 and served as the dining center before Blackhawk Commons was built. In 2010 it was renovated and renamed the Student Success Center, with the fresh purpose of offering academic and counseling services to students to support student success. Some unique highlights include a relaxation room, an adorable therapy dog, full-time academic advisors, and the Career Closet, which features free business attire for students!

Did you know.... that every office in the Student Success Center is free for students to utilize? This includes the Center for Academic Resources (the Writing Center and student tutoring), Career Services and more.

Ground source geothermal technology helps heat and cool the building, along with 84 photovoltaic panels that generate 24,000 kWh. It's just one of the many buildings on campus with sustainable features!



Academic advising

Offices/Departments:

Career Services
Center for Academic Resources
Counseling Center
Undergraduate Advising



The Career Closet offers free professional attire.

DIRECTIONS: When you exit the Student Success Center, turn left and head down the path at the end of the street. You'll find yourself standing surrounded by a group of residence halls, which include Fletcher, Evans, Stewart and Horizon.



Horizon Village

UW Oshkosh has 10 residence halls for students. They are primarily located on one half of campus, in close proximity to other student life facilities such as the dining center, recreation facilities and student union. The layout of each hall varies, but the primary amenities in each hall are consistent. In this section you'll find some basic details, but for the most updated and detailed information, visit the UWO Residence Life web page.

HORIZON VILLAGE

- Capacity of 380 students
- Four-person suites with two bedrooms or four bedrooms, one and a half private bathrooms, living room and kitchenette
- Amenities include air conditioning and all the furnishings for the suite
- Sophomores, juniors and seniors can live here
- Sustainable features (that earned LEED Gold Certification!) include a green roof, trash enclosure, geothermal ground-source heat pump for heating and cooling, and geothermal hot water production

FLETCHER HALL

- Capacity of 480
- Triple rooms for sophomores and up, and double rooms for all students, including first year
- Renovated in August 2017
- Includes air conditioning and customizable furniture



Fletcher Hall

TAYLOR HALL

- Capacity of 468
- Double rooms
- Amenities include air conditioning
- Recently renovated in 2006
- Located in the center of campus



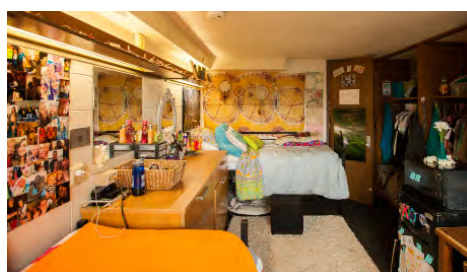
Taylor Hall

NAME	BUILT	FACTS
Donner Hall	1962	All-class hall, smaller community
Evans Hall	1965	First-year hall
North Scott	1967	All-class hall, features an LGBTQ Rainbow floor, dining options
South Gruenhagen	1966	First-year hall, features international student floors
South Scott	1967	First-year hall, Honors College floor, dining options
Stewart Hall	1965	First-year hall
Webster Hall	1957	First-year hall, conveniently located near Sage Hall

ALL-HALL AMENITIES

The following are included in every room:

- Bed for each student
- Desk for each student
- Shelving unit for each student
- Closet for each student
- Carpeting
- Lighting
- Trash & recycling cans
- Smoke detector
- Curtains
- Internet
- WiFi
- Cable TV



Example of a residence hall room



Four-bedroom suite in Horizon Village



Students hang out in the Horizon lounge.

DIRECTIONS: Continue on the path between Fletcher and Horizon towards Elmwood Avenue. Your next stop is the gray brick building just across the street!



Opened: 1967

The Center of Equity and Diversity is home to the University Women's Center, Division of Academic Support and the LGBTQ Resource Center. The Center puts on many events and training sessions throughout the semester for students and faculty, all celebrating diversity and creating awareness for inclusivity.

Did you know.... that there are many free services offered to students? These include: SAFE training, free feminine hygiene products and resources for anxiety and other health concerns.

Foundation Hall, the southern wing of the building, was originally a Catholic chapel building.

The LGBTQ Resource Center puts on several events throughout the year, including a LGBTQ Ally March, a drag show and speakers.

Offices/Departments:

Division of Academic Support
LGBTQ Resource Center
University Women's Center



Entrance to Campus Center for Equity and Diversity



Women's Center



LGBTQ Ally March

DIRECTIONS: Continue around the block past Horizon and turn left at Algoma Boulevard., across from the Scott Hall towers. Lincoln Hall stop is just a few paces ahead!



LINCOLN HALL

Opened: 1964, renovated 2010

This old elementary school building was bought by the UW System from the Oshkosh Area School District in 2010, and Lincoln Elementary's name was changed to Lincoln Hall. Following renovations, the hall hosts the UW Oshkosh Children's Learning and Care Center and the Division of Online and Continuing Education (OCE).

Did you know.... that students as young as two weeks old can begin their journey on campus at the Children's Learning and Care Center, while retirees can receive education through programs like OCE's Learning in Retirement?

Did you know.... that UW Oshkosh has nine undergraduate online programs and three graduate online programs through OCE?

Did you know.... that the Children's Learning and Care Center is nationally accredited through the North Central Association on Accreditation and School Improvement?

Ten percent of the materials used for construction were extracted, harvested and manufactured within a 500 mile radius of Oshkosh.

The building now has water-reducing plumbing fixtures, which provide a 20 percent greater reduction in water usage.

Offices/Departments:

Online and Continuing Education

UW Oshkosh Children's Learning and Care Center



Children's Learning and Care Center

DIRECTIONS: Turn around and head the opposite direction, down Algoma towards the next stop. Blackhawk commons will be on your left.



BLACKHAWK COMMONS

Opened: 1970, renovated in 1985, 2002 and 2017

Blackhawk Commons is the main dining center for students. It's an all-you-care-to-eat facility that offers various meal stations, including a soup and salad bar, pizza, made-to-order subs, pasta, burgers and fries, fresh fruits and vegetables, homestyle meals, sandwiches, a dessert bar, scoopable and soft-serve ice cream, and more than 20 different beverage options. Blackhawk also has a takeout option for students on the go, called 2Go@BHC. There you'll find chicken wraps, burritos, nachos, sandwiches, mashed potato bowls and more.

Did you know.... that 2Go@BHC (like all other dining stops on campus!) is integrated with an app called Tapingo? This lets you pre-order your food and go pick it up when it's ready—completely skipping the line.

Blackhawk has tower gardens inside that grow lettuce and other herbs, which are used in some of the food! The gardens are hydroponic, which is a method of growing plants without soil, using mineral nutrient solutions in a water solvent.

During finals week there is a really popular tradition known as "The Chancellor's Late Night Breakfast," where students come to Blackhawk to enjoy a delicious breakfast, free prizes and games, free chair massages and live music, all served by the Chancellor and other faculty and staff.

Offices/Departments:

University Dining

University Parking Services

Did you know.... that the famous buffalo chicken wraps offered at 2Go@BHC used to be only offered two days a week? Due to popular demand, they were upgraded to a full-time item. Make sure you try one!



Students head to the Chancellor's Late Night Breakfast.



Tower gardens



The legendary Buffalo Chicken Wrap



A few of the food stations in Blackhawk



The home cooking line features a different dish each meal.



One of the updated seating areas

DIRECTIONS: Continue down the path along Algoma. On the other side of the Blackhawk parking lot, you'll see a yellow and brown house, which is your next stop!



Opened: 1902

This resource center brings people of all backgrounds together to promote and celebrate diversity. This building also serves as a resource and information center for students, staff, faculty and members of the community who are interested in growing their inter-cultural knowledge. The Center organizes various enrichment programs and activities occur throughout the year to increase the level of understanding and appreciation of diversity within the Oshkosh community. The MEC is often referred to as "a home away from home" by many multicultural and international students.

Did you know.... that this building is located right across from Reeve Union? This makes it easily accessible for the campus.

Did you know.... that there are many resources in this building? These include the Norma Shanebrook Multicultural Library, a microcomputer tutorial lab, the Writing Assistance Program, the Mathematic Skills Tutorial Program and a student study lounge.



The MEC from Algoma Boulevard



Interior of the library room of the MEC

Organizations:

- Inter-Tribal Student Organization
- Asian Student Organization
- Black Student Union
- Student Organization of Latinos
- Hmong Student Union
- Multicultural Education Coalition



Students congregate outside the MEC.

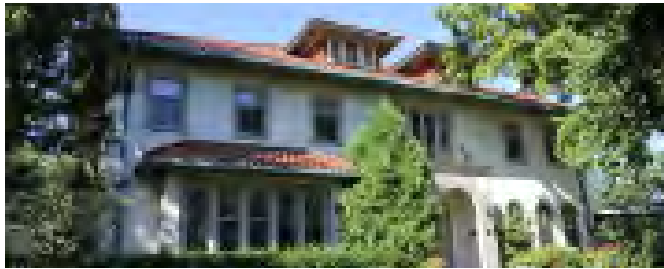
DIRECTIONS: Continue down the path, and just past Taylor Hall you'll find the Pollock House!



Opened: 1920

Pollock House was constructed in 1920 for William Edward Pollock, who was the president of the Oshkosh Overall Company, now known as Oshkosh B'Gosh. When it was purchased, the University planned to use the house as a meeting place for wartime trainees of the 96th College Training Detachment air crew, and also as the detachment clinic, dispensary, infirmary and detention ward. All of these services were relocated to an overcrowded Swart Hall where the trainees lived. After the war, the house was used as a women's dormitory until 1967 when it became the headquarters of the newly founded School of Nursing. In 1971, the house became home to the Alumni Association, until the University Studies Program moved in in 2012.

Did you know.... that rooms in the Pollock House can be rented out for club meetings?



Exterior of Pollock House

An inter-connecting hallway was built in 1952 after Radford Hall opened next door, allowing students to move easily between the two structures.

The Pollock House was listed on the National Register of Historic Places in the United States in 1984.

Offices/Departments:
University Studies Program



Students relaxing by fireplace, 1950s



Pollock House, 1930s

DIRECTIONS: Continue along the path! Our next stop is just next door on the right; Radford Hall.



RADFORD HALL

Opened: 1952

Named after Radford Company president Frank Radford, whose land was used for the building, Radford Hall was the first designated residence hall built on campus. It originally held 80 residents on two floors, but had a third floor added in 1956 to accommodate additional students. It is no longer a residence hall and is now home to faculty offices and the Student Health Center.

Did you know.... that Radford's Student Health Center is a great place to get free or affordable health care? Students have access to checkups, lab tests, immunizations, medications and more for a fraction of the usual cost. A general wellness check is free!

The building used to be linked to the Pollock House with a hallway for easy access to both buildings.

The Student Health Center has several initiatives around campus including De-Stress Fest After Dark, Spring Break Health Fair, campus-wide events and campaigns and so much more!

Radford features a full computer lab for students in the basement.

Offices/Departments:

English Department
Student Health Center

DIRECTIONS: Continue down the path just a bit farther and enter the building next door to Radford.



CLOW SOCIAL SCIENCE CENTER

Opened: 1966, renovated in 2016

Clow is best known for nursing and education, but it also houses the social sciences. The facilities generate excitement about teaching and learning by providing a technology-rich environment. The nursing lab classrooms were designed to simulate real-world experiences in a space that is safe, healthy, sustainable and energy efficient. Clow facilities provide practicing healthcare professionals with top-notch training opportunities.

Did you know.... that Clow has brand new state-of-the-art nursing simulation facilities that opened in spring of 2016?

When Clow was first built, it allowed many departments to move out of the historical houses around campus and into bigger buildings and offices.

There is a second wing called Clow Faculty, which is home to many faculty and department offices.

Cafe Clow is a great on-the-go dining option that accepts meal plans.

Offices/Departments:

Criminal Justice Department
Education/Human Services
Nursing
Political Science Department
Psychology Department
Foreign Languages and
Literature Department



Large lecture hall in Clow



Nursing simulation lab



Classrooms are designed for group collaboration.

DIRECTIONS: Exit out the doors you entered through, and take the path that goes between Clow and Radford. This path takes you straight to your next stop, Sage Hall!



SAGE HALL

Opened: 2011

Sage Hall opened in fall of 2011, and is UW Oshkosh's newest academic building constructed from the ground up. Sage is the most environmentally friendly and efficient building of its kind in Wisconsin, and it continues to be sustainable through the use of natural light, solar panels and a green roof.

Did you know.... that Sage Hall has 27 state-of-the-art classrooms, two large lecture halls and 23 labs? The large lecture halls can seat up to 260 students, making them the largest lecture halls on campus.

Did you know.... that the Sage Cafe offers Starbucks drinks, pastries, breakfast sandwiches and more?

Did you know.... the College of Business is the first in the state to have a student-managed investment fund? The fund has grown to over \$650,000,000!

Sage's name has multiple meanings:

- a mentor in spiritual and philosophical topics who is renowned for profound wisdom
- having wisdom that comes with age and experience
- any of various plants of the Genus Salvia; a cosmopolitan herb

The sustainable features of Sage save UWO about \$182,000 annually!

The College of Business at UWO is the only business program in Northeast Wisconsin offering both undergraduate and graduate degrees accredited by the Association to Advance Collegiate Schools of Business (AACSB).

Offices/Departments:

College of Business Administration
Economics Department
Environmental Studies Program
Geography and Urban Planning Department
History Department
International Studies Program
Journalism Department
Sociology Department
Women and Gender Studies



Solar panels make Sage more sustainable.



The largest lecture hall on campus

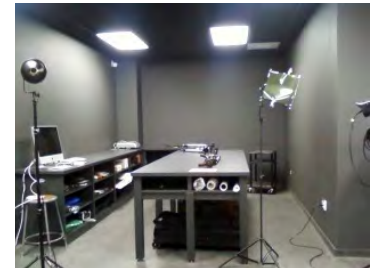


Photo studio on the third floor



Medium sized classroom



Small classroom / computer lab



The courtyard increases natural light inside Sage Hall.

TOUR NOTE: INTERIM & THE ACADEMIC YEAR

UW Oshkosh has two main semesters that make up its academic year: fall and spring. Summer is an optional term. The fall and spring semesters are broken into two main parts: a 14-week semester and 3-week interim. These two parts cumulatively form a combined 17-week semester. The optional 3-week interim is unique to UWO because it is considered part of the broader semester, and as such, does not cost students any additional tuition, provided they are within the 12-18 credit range with all 14-week and interim courses combined. This is a great value for students— especially when you consider that housing and dining are also included at no additional cost. For more information contact us at admissions@uwosh.edu.

14 - WEEK SEMESTER

WINTER BREAK | 3 - WEEK INTERIM

FALL SEMESTER

DIRECTIONS: Exit out the main doors of Sage and turn right. Follow the path along High Avenue until you reach Kolf Sports Center, which will be the next large building on your right.



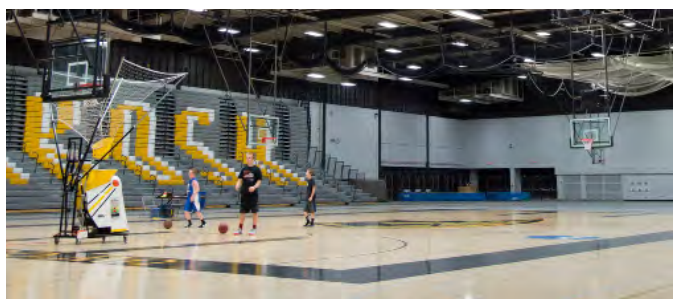
KOLF SPORTS CENTER

Opened: 1971, renovated in 2012

Also known as the Kolf Physical Education Center, Kolf holds the majority of UW Oshkosh's indoor athletic events including gymnastics, volleyball, track and field, basketball and wrestling. This is also the home to some intramural sports, concerts, commencement ceremonies and classes in military science, physical education and dance.

Did you know.... that UW Oshkosh has 46 National Championships and is part of the most winning conference in D3 history?

Did you know.... that not only is first-year student orientation here, but graduation commencement is also held here? Your Titan journey begins and ends in Kolf!



Students shoot hoops in Kolf.

Basketball and volleyball games can seat up to 5,600 people.

Athletic events are free for students with their Titan I.D.!

The Army ROTC program is housed in Kolf. The indoor gun range is used for the traditional Turkey Shoot competition each November.

Offices/Departments:

Department of Physical Education and Health
Department of Military Science
Army ROTC
Titan Athletics



The Titan volleyball team huddles before the next set.

DIRECTIONS: When you exit out the back of Kolf, continue across the parking lot and cross Pearl Avenue. You'll see a small building up against the river, which is the next stop!



ERIC LAB

Opened: 1979

Located along the Fox River, the ERIC (Environmental Research and Innovation Center) is a research and testing facility for our environmental health professionals. They do many types of testing including environmental health, biogas and compost. The lab also takes on clients from the community and customizes research to their needs.

Did you know.... the ERIC lab places more than 30 students into lab internships for the summer throughout Wisconsin? These internships are paid, include housing and can be for course credit.

The ERIC lab has the Seal of Testing Assurance (STA). This means that the lab is certified by the United States Composting Council.

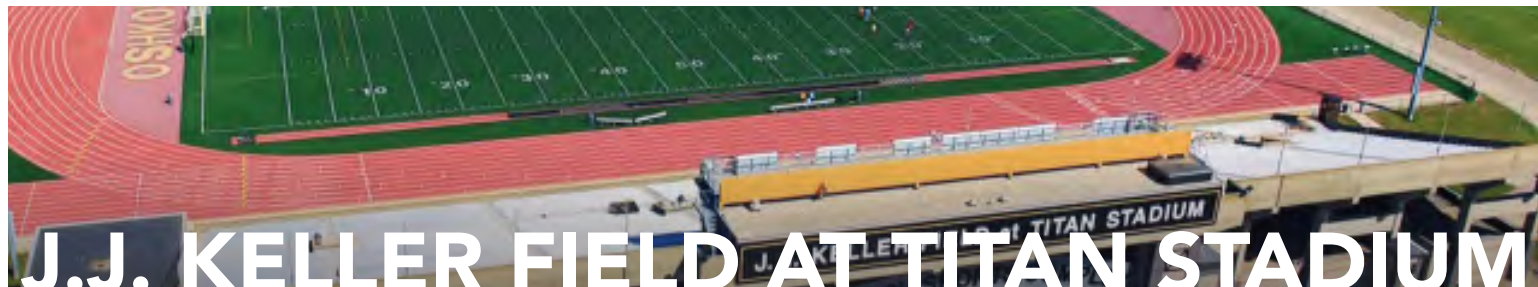
The ERIC lab processes soil samples from across the country.

Organic waste from the campus is turned into Titan Gold Compost, which is sold at the ERIC.

Offices/Departments:
Environmental Research



DIRECTIONS: The suggested walking tour route does not go to the next location, Titan Stadium, as it is across the river. We recommend reading about Titan Stadium and continuing to the Student Rec & Wellness Center, which is just down Pearl Avenue.



Opened: 1970, renovated in 2004

Cheer on your fellow Titans at the J.J. Keller Field at Titan Stadium. This stadium is part of the Oshkosh Sports Complex and is used for football, soccer, and track and field competitions. Baseball and softball games are also held at this sports complex. The stadium was remodeled in 2004 through public and private entities like J.J. Keller and Associates, the Oshkosh Convention and Visitors Bureau and the UW Oshkosh Student Association.

Did you know.... that the stadium hosts about 120 events each year, including the Wisconsin Football Coaches Association (WFCA) All-Star Game?

The stadium for the track and field, football and soccer events has a capacity of 9,800 people.

The nine-lane, Olympic-quality competition track hosts the USA Track & Field Masters.

The field has synthetic turf that resembles natural grass on the football/soccer field and is designed to reduce athletic injury.

Competitions Hosted:

Football
Soccer
Track & Field
Baseball
Softball



Titan Stadium, 1989



Football game at Titan Stadium



Soccer players celebrate a goal



Games are often broadcast live on Titan TV.



A hurdler competes at Titan Stadium.



In 2016, a new turf field was installed.

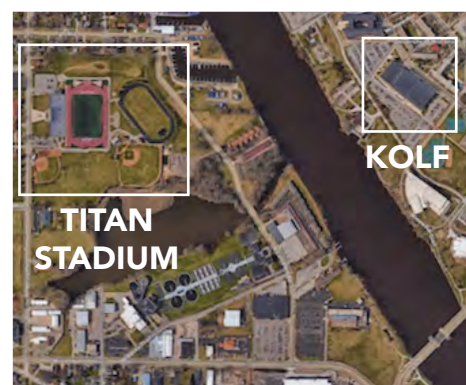
TOUR NOTE: ATHLETIC TEAMS AT UW OSHKOSH

MEN'S TEAMS

- Football
- Basketball
- Baseball
- Cross Country
- Track & Field
- Swimming & Diving
- Wrestling

WOMEN'S TEAMS

- Golf
- Basketball
- Softball
- Cross Country
- Track & Field
- Swimming & Diving
- Gymnastics
- Soccer
- Tennis
- Volleyball



DIRECTIONS: Continue down the path along Pearl Avenue until you reach a longer path going to the right. Follow that path towards the large building along the Fox River.



STUDENT RECREATION AND WELLNESS CENTER

Opened: 2007

The Student Rec and Wellness Center (or SRWC) has high-quality gym equipment, fitness classes, personal trainers, intramural sports and the Outdoor Adventure Center. The 104,000 square foot building includes a rock climbing wall, three basketball courts, free-weight theater, a multipurpose gym for soccer, basketball and floor hockey, and a walking and jogging track.

Did you know.... that the Outdoor Adventure Center offers low-priced rentals for bikes, roller blades, kayaks, paddle boards, backpacking and camping gear, skis, snowboards and all kinds of other outdoor gear?

Did you know.... that trips hosted by the Outdoor Adventure Center including rock climbing, backpacking, skiing and more?

Did you know.... that you can check out recreational and conditioning equipment for free at the front desk with your Titan ID? These include volleyballs, basketballs, soccer balls, footballs, jump ropes, frisbees, softballs and gloves, tennis racquets, TRX straps, weight belts, wrist straps and more!

The SRWC was the 2010 Grand Prize winner for Outstanding Design and Architecture in Education in the college and university category.

Almost 2,000 students use this facility EVERY DAY during the academic year.

There are more than 100 pieces of cardio equipment in the Rec!

Programs Offered:

- Group Exercise Classes
- Intramural Sports
- Massage Therapy
- Outdoor Adventure Center
- Personal Training
- Sports Clubs
- Strength and Conditioning



A jogging track is suspended above the three full courts.



Kayaks and other outdoor gear can be rented.



Open rock climbing is available .



Conditioning equipment



Lifting equipment

DIRECTIONS: Continue down Pearl Ave., and turn left on Osceola St. The facility on your right adjacent to the Gruenhagen towers is your next stop!



REC PLEX

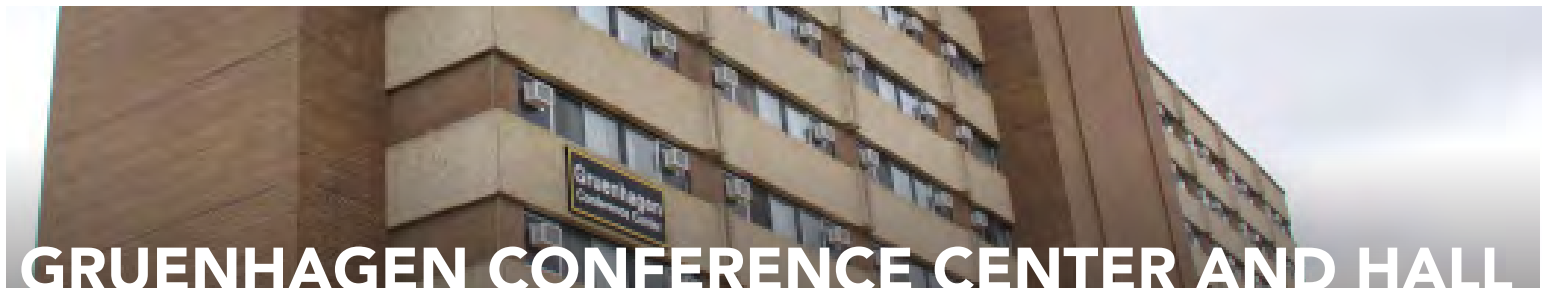
Opened: 2018

The Rec Plex is an incredible new addition to campus! It spans 4.32 acres and includes lighted fields with multi-use synthetic turf. There is also a 3,000 square foot support building and seasonal dome, which covers the facility and provides heat for year-round outdoor recreation activities.

Did you know.... the Rec Plex is for all students? It is used for informal recreational activities, sports club practices and competitions, intramural sports and athletic team practices.



DIRECTIONS: Head up to the corner of Osceola Street and High Avenue. Check out the tall towers on your right!



GRUENHAGEN CONFERENCE CENTER AND HALL

Opened: 1966

The 10-story tall Gruenhagen Conference Center (GCC) is a full-service, year-round conference center that holds meetings, workshops, seminars and large conference events throughout the year. It also serves as a hotel where families and visitors can come to stay right on campus and near downtown Oshkosh. Additionally, South Gruenhagen houses a significant number of first-year students, international students and offices.

Did you know.... that the Department of Residence Life proudly offers the Living in a First-Year Environment (LIFE) program to first-year students? South Gruenhagen is one of several residence halls that participates. LIFE is an all-freshman residential living environment designed to help ensure freshman make a successful transition from high school to college.

Did you know.... that it only costs \$30 per night for guests to stay in the Gruenhagen Conference Center hotel?

The conference center has 17 distinctive conference rooms for 4 to 500 guests, state-of-the-art technology, full catering service from casual dining to gourmet and nightly lodging for 800 guests year-round.

Most of the international students on the UWO campus live in South Gruenhagen.



GCC hosts many large groups, including Badger Girls State.

Offices/Departments:

Gruenhagen Conference Center

Department of Residence Life



Conference guests check in.

DIRECTIONS: Go left on High Ave. and begin walking back on the opposite side of the street. Your next stop, University Police, will be adjacent to Blackhawk Commons on the right.



UNIVERSITY POLICE DEPARTMENT

Opened: 1962

UW Oshkosh's dedicated University Police Department aims to provide a safe campus environment conducive to personal growth and educational development. The University Police (UP) employs two full-time law enforcement dispatchers, a Dispatch and Records Supervisor, full-time officers and about 45-50 part-time student employees who are called Community Service Officers (CSOs). Our UP is friendly, informative and always willing to help students.

Did you know.... that the Safewalk program is a great way to safely travel to places on or off campus? Two CSOs will come to your location and walk you up to a mile and a half off of campus! You can request a Safewalk through the UWO Mobile App or by calling the number provided. The CSOs are always friendly and willing to help! Take advantage of this great service!

Before the building became home to the UP, it was the Credit Union building and also a faculty development building.

The UP patrols the campus 24 hours a day, seven days a week to always make sure we have a safe campus community.



University Police officers provide event security.

Employs:

Chief of Police

Captain of Police

Police Lieutenant (specializing in event and emergency management)

Patrol Sergeants (two who oversee patrol operations)

Detective

Police Officers (eight full-time)

DIRECTIONS: Continue and take a right on the path at the crosswalk. Continue straight and you'll end up back at Reeve Memorial Union.

THANKS FOR VISITING UW OSHKOSH!

We hope you enjoyed this walking tour document!

If you have any questions, would like to meet with an Admissions counselor, or would like a guided tour, please contact the Admissions Office. We offer student-led tours Monday through Friday at 10 a.m. and 2 p.m., as well as select Saturdays at 10 a.m. We would love to meet you, so sign up today!

Visit uwosh.edu/go/visit to schedule!

Let us know what you thought of campus by using
#uwovisit on social media!

(920) 424-3164
admissions@uwosh.edu

