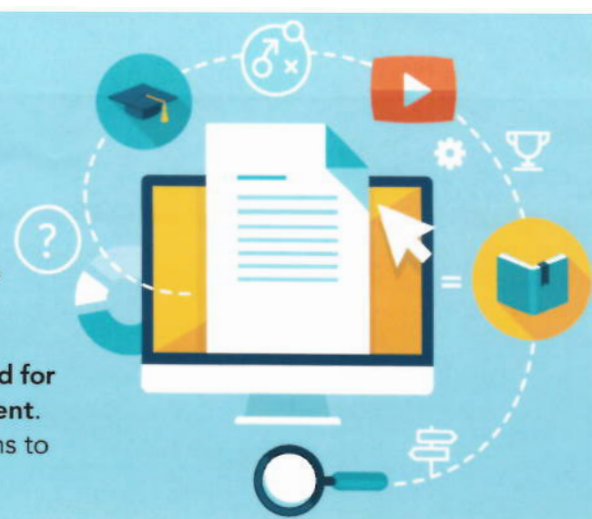


# Classroom Assessment Online Professional Development

The University of Wisconsin Oshkosh College of Education and Human Services is now offering fully online professional development (PD) that **clearly connects K–12 teachers' learning with daily classroom practices**. Participants will enjoy **research-based, graduate-level coursework** in a supportive online environment that makes learning flexible and accessible. The courses are **designed for an individual at home or school-district-sponsored professional development**. These **affordable** courses are also offered as either credit or non-credit options to meet individual teachers' needs.



## Sequence

This one-year sequence of linked courses is designed to deepen K–12 teachers' understanding of effective classroom assessment practices. Courses will focus on formatively assessing students, making instructional decisions based on assessment data and including evidence of student learning in the teacher evaluation process. Additionally, this program focuses on using performances to assess the integration of content and discipline-specific practices and using effective grading processes to support and report student learning. All assignments are embedded in classroom practice.

The course sequence includes:

- **Classroom Assessment** (3 credits/points)
- **Designing and Implementing Performance Assessments** (2 credits/points)
- **Effective Grading** (1 credit/point)
- **Principals of Appraisal and Evaluation in Education** (3 credits/points)

## Online Professional Development Outcomes

**As a result of this professional development program, educators will be able to:**

1. Understand how to determine the validity and reliability of assessments.
2. Describe the formative assessment process as including planning, implementation, analysis, feedback and instructional decision-making.
3. Identify and implement a variety of formative assessment strategies to uncover evidence of student learning.
4. Understand and use characteristics of effective feedback for promoting student learning.
5. Develop, implement and analyze performance assessment strategies.
6. Develop a standards-based grading process for their course or department.
7. Describe a variety of philosophical orientations towards the use of measurement data for evaluation.

## Cost

\$150 per certificate point (no-credit) or \$225 per graduate credit  
Courses can be applied toward a master's degree at UW Oshkosh.

## Learn more

For more information, contact **Dr. Eric Brunsell** at [brunsele@uwosh.edu](mailto:brunsele@uwosh.edu) or (920) 424-2477.

UNIVERSITY OF  
WISCONSIN  
OSHKOSH

College of Education and Human Services  
800 Algoma Blvd. • Oshkosh, WI 54901  
(920) 424-3322  
[uwosh.edu/coehs](http://uwosh.edu/coehs)

